



Skyline Ridge Runner

July 2008

Skyline Ridge Neighbors

Vol. 20, No. 3

A Nonprofit Neighborhood Association Serving Northwestern Multnomah County, Oregon

SRN Summer Gathering Moves to Skyline School August 2

Elinor Markgraf

Though we haven't yet met our twenty year mark, we're pretty close, and already talking about traditions. This year marks a lot of changes for our annual gathering.

While the Skyline community remains the loving, close-knit group of neighbors and friends, our yearly fundraiser is going to be very different this year and we all need to adjust.

This year the gathering will still be a potluck, with games, entertainment, and a fundraising auction, but instead of being held at Shadysprings Farm, the Summer Gathering will be at Skyline School, where generations have been awed by the breathtaking view. It's still a "gathering" (even though that sounds a little like Stephen King's *Children of the Corn*), we're still neighbors, and it's still going to be a blast.

This is, however, a FUNDRAISER, financing all that Skyline Ridge Neighbors does for us, and "us" means you too. If you don't know what the neighborhood association does for you, don't expect me to tell you, just read on. While you're reading, drive to the ATM to get all the spare cash you'll want to spend on the wondrous delights available for the bidding at the auction.

So mark your calendars for August 2, rearrange your vacation plans and elective surgeries, buy your sunscreen, and figure out what you'll be bringing for the potluck. We who are working on the summer gathering feel your dish should be delicious and savory. But that's just us. No pressure. Iced tea and lemonade will be provided. Again, be a sport. Bring a cup. While you're packing that picnic basket, if you throw in your own plates, forks, etc., it would be a big help to the clean-up committee.

Volunteer: it's more fun that way

We still need volunteers. If you're new to the neighborhood, this is the best way to get to know your new

friends and not be new to the neighborhood anymore. If you have a teenager lolling around the house complaining that you aren't entertaining enough, have that kid call Becca Kelvin (503.690.9801). We need their muscle for setting up and their light-hearted spirits to help with the games. It will get them out of the house for one morning anyway.



"Pull harder or you'll get wet!" Kids enjoy playing tug-of-war, one of the many games at the Summer Gathering. (Photo: Karin Hunt)

Creative and offbeat auction items needed

Items to be auctioned are needed. If you have a fabulous donation, it will benefit you, your community, and give you an honest-to-god legit tax deduction.

We have the paperwork and everything. Imagine how much we could get if every one of you went to your boss and asked for a donation from the company. If you don't have a boss, then congratulations. Give us something of your own. (Not that lazy teenager, though; we've plenty, thanks.)

Okay, so maybe I sound greedy. I don't care. I'm shameless. Cough it up. To arrange this terrific deal, contact any of the following (or all, if you're having a slow day):

Cindy Banks	503.629.9700
Rhonda Kelvin	503.690.9801
Jolene Williams	503.247.7135
Elinor Markgraf	503.621.3192

If you have small items to donate for the as-is table, call Sara Bowersox at 503.621.0426 or drop items off at her house (16244 NW Rock Creek Road) up to, but no later than July 31. These little hot potatoes can bring big money. We love books, plants, videos, and toys. Clear out your closet and send your stuff on to new homes.

A little something new

In a lame attempt to maintain our old timey feel, we're going to do something new. Remember cake walks? Neither

Summer Gathering, p. 2 ►

Skyline Ridge Runner

Editor: Laura Foster

Copy Editor: Patrick Ahern

Production: Miles Merwin, Karen Garber

Contributors: Susan & Patrick Ahern, Anne DeVane, Kerrigan Gray, Karin Hunt, Kamela Kern-Korot, Elinor Markgraf, Cheryl Neal, Sen Speroff, Wendy Stevens

Logo and artwork: Bruce Riches

Send comments, articles and opinions to the Editor, 14355 NW McNamee Road, Portland, OR 97231, ridgerunner@skylineridgeneighbors.org or fax to 503.621.3450.

Skyline Ridge Neighbors Inc.

Skyline Ridge Neighbors is a nonprofit organization serving rural northwestern Multnomah County through educational, environmental and social programs that inform residents on relevant issues and events. SRN endeavors to better our community, encourage volunteer efforts and openly communicate with residents and outside organizations.

SRN Board of Directors

(including officers and committee chairs)

Karen Garber, President / 503.289.7169
president@skylineridgeneighbors.org

Laurel Erhardt, Treasurer / 503.621.3501
treasurer@skylineridgeneighbors.org

Miles Merwin, Secretary / 503.621.9867
secy@skylineridgeneighbors.org

Cindy Banks, Fundraising / 503.629.9700
fundraising@skylineridgeneighbors.org

George Sowder, Land Use / 503.621.3552
landuse@skylineridgeneighbors.org

Rich Edwards, Natural Resources / 503.621.3326
naturalresources@skylineridgeneighbors.org

Natalie Harger, Public Services / 503.621.3215

Libby Merwin / 503.621.9867

Rebecca Jenkins / 503.621.3392

Beulah Blades / 503.621.3548

Skyline Rural Watch Newsline

Subscribe to SRN's weekly email newsletter of local events and news by sending your email address to skylineruralwatchnewsline@hotmail.com. Contact the Editor, Rich Edwards, at the same email address or at 503. 289-7169 to submit items for publication.

SRN Website

Visit www.skylineridgeneighbors.org for more news, photos and information about our community. Contact the Webmaster, Agnes Kwan, at webmaster@skylineridgeneighbors.org.

► Summer Gathering

do we. But we've heard of them and think they'd be fun. All we ask is that you fire up that oven and bake us a cake. (Or whatever. You know. Cake, brownies, pie, cobblers, etc.) We need commitments so call Jolene at 503.247.7135 before she has to call you. Take pride in your work! Here's your chance to show off. I, myself, know that no one makes a better pie than I do. Prove me wrong. Just try.

There's more: entertainment will be on hand

While we all spend lavish sums of money in support of our community, we'll be entertained from 2 to 4 p.m. by the musical genius of our own Hill Band, featuring the incomparable Billy Kennedy, Jim Boyer, David Reisch, and David Platt. You'd have to pay big money to hear these guys in town. Think of the gas saved! Take that money and add it to your donation. Or the tip jar—it's your call.

The oral auction will be held from 4 to 4:30 p.m. Maybe we'll have a little more a little later. It depends on you and what your donations bring. Those who shun the spotlight of an oral auction needn't fear. They can spend their money while engaging in the competitive (and sometimes violent) silent auction, which runs from 2 p.m. until it's over. We've asked that Animal handle security this year, which should ease the minds of those still nursing elbowing injuries from past silent auctions. So far, haven't heard back from Animal, but we know he's got plenty of friends who might step up to the plate. Remember Altamont?

Billy Kennedy will host an open mike from 5 to 6 p.m., so be thinking about your performance. A poem, a song, a story, the hokie-pokie—all will be applauded and cheered.

Libby Merwin will once again provide all the free art materials needed for you or your little one to create a masterpiece, and Tualatin Valley Fire and Rescue will have a table with information about safety and fire prevention.

Homemade ice cream will put a high calorie cap on our day, but you can expend those calcs on the famous end-of-the-day tug of war, which for the first time in history will be held on a level playing field, so now we will finally know who's the strongest and who has been big fat cheaters.

In a nutshell: Bring money. Spend money. Listen to great music. Bring food. Eat food. Go home with a new treasure or two.

Try to keep your shoving to a minimum. ☐

Laura Sheldon, Real Estate Broker

Direct: 503-906-1369

Email: laurasheldon@prunw.com

Website: www.laurasheldon.com

Skyline resident...
Skyline realtor!



9600 SW Barnes Rd. #100
Portland, OR 97225
Office 503 292-9393



©2006. An independently owned and operated member of Prudential Real Estate Affiliates, Inc.
Prudential is a service mark of The Prudential Insurance Company of America. Equal Housing Opportunity

Welcome new Board members!

Skyline Ridge Neighbors has four new Board members: Beulah Blades, Natalie Harger, Rebecca Jenkins-Law and Libby Merwin. Thank you for answering the call to work for our community!

We asked each of them to tell us a bit about themselves. We'll hear from Beulah and Rebecca in the next issue.

Natalie Harger

Natalie has lived on Rock Creek Road for seven years, and when she was asked what she loved about the Skyline neighborhood and why she volunteered to be on the Board, she said, "I have friends who grew up here and I have always loved the forest and fresh air. I want to help preserve what we have. I believe in community involvement. I am also a member of the Beaverton School District's sustainability committee and would like to see Skyline Ridge move in a sustainable direction."



Libby Merwin

"Hi. I'm Libby Merwin and I've lived on Skyline for about 5 years. My husband Miles and I have a business, Ridgeback Tree Farm, and we care for about 5 acres of Noble Fir Christmas trees. We have one grown son, and a very large, playful puppy named Tekla.



Retired after working as public service director and announcer for the PBS station in Sacramento and later as an announcer for UC Davis, I enjoy printmaking, playing piano, and gardening. For the last several years I've been the "art lady" at the summer gathering.

I decided to join the Board because I love this breathtakingly beautiful spot on the planet, which I feel so fortunate to call home, and because I enjoy getting to know my neighbors better (even though I'm shy). Joining the Board seemed like a good way to get more involved in our unique community and maybe do some good. Also, I've been to several of the meetings, and they're always fascinating. It's my pleasure to serve on the Board." □

Thanks for years of community service

Laura Foster

With this issue, we say goodbye to the Ridge Runner's longtime layout editor, Karin Hunt. Karin was a founding member of Citizens for the Preservation of Skyline Ridge in 1987, the neighborhood organization that eventually became Skyline Ridge Neighbors. She and her partner Michael have hosted the annual neighborhood gathering

for many years at their Shadysprings Farm on Rock Creek Road.

Karin's work on the Ridge Runner began on day one and though editors have come and gone (with Sen Speroff being the longest tenured, at 10 years), Karin kept volunteering, for 21 years. In the early years, Karin said she typed up the two page newsletter on her electric typewriter. Today, the newsletter is laid out using In Design software. Besides her work for our neighborhood organization, Karin has served on the Multnomah County Land Use Commission and on the board of the West Multnomah Soil and Water Conservation District.

With her horses, boat and farms to keep her busy, Karin is retiring from her community work to enjoy more time with Michael. As she put it, "After twenty years, I've done my good karma!" We agree.

This is the first issue of the Ridge Runner to be laid out by Miles Merwin, who has been Secretary for the Skyline Ridge Neighbors Board since 2006. "I hope to fill the 'big boots' that Karin has left behind," he said, "and I welcome reader comments as the newsletter style evolves into its next incarnation."

Welcome Miles, and thank you for stepping in to this very big job, and Karin, thank you on behalf of all of our neighbors for your huge contributions to Skyline! □

Treasurer's report

Laurel Erhardt, SRN Treasurer

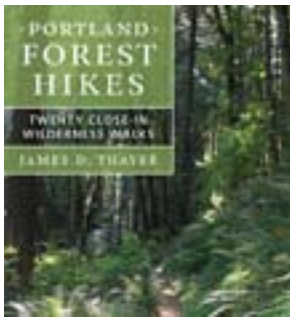
Our expenses are routine, and we are warming up the calculators for the Summer Gathering. Thank you Joan Tanner for your donation, and Terry and Sandy Hart for their donation in memory of Helen Perry who lived in the area for many years and always attended the Summer Gathering. As usual, I welcome all comments and suggestions. Your fiscally conservative board will continue to use your donations wisely. □

**SRN Income and Expense
4/22//2008 through 5/25//2008**

Income	
Interest	72
Donations	140
Ad	40
TOTAL Income	\$252
Expenses	
Ridge Runner Postage and Printing	1001.89
Hall Rental & Admin Expenses	207.95
TOTAL Expenses	\$1209.84
Net Cash Flow	-\$957.84

New hiking book for Skyline area

Laura O. Foster



Portland Forest Hikes: Twenty Close-in Wilderness Walks is a new book by Jim Thayer that leads hikers onto less-visited trails in Forest Park as well as seven walks on trails, fire lanes and logging roads that lie beyond the park's northern boundary. These seven have not been written up before and

provide a great way to explore less traveled areas beyond Forest Park. The author notes in his Introduction, "Imagine hiking trails from Portland to the Coast Range....This dream inspired this book of twenty wilderness hikes."

One walk is to Elbow Ridge View, a four-mountain view hike that begins on Skyline Boulevard between Moreland and Johnson roads. Another hike, lower on the flanks of the mountain, is the Beaver Ponds Loop, off Rocky Point Road.

Thayer is president of the Southwest Hills Residential League neighborhood association in Portland, and was a past president of Friends of Forest Park. The book was published in Spring 2008 by Timber Press and is available at local bookstores and at online booksellers. □

Burglary on Rock Creek Road...\$500 cash reward offered

A neighbor in the 14000 block of NW Rock Creek Road reports: "Sometime between 12:30 a.m. and 6:30 a.m. Friday, 12 June 2008, our home was burglarized. We were asleep inside at the time. The perpetrators entered through a sliding picture storm window, stealing our laptop computer, a pair of sunglasses, and keys. They also broke into our shop and stole numerous tools."

"Although this crime is disturbing on many levels, the most unsettling element is that the perpetrators entered the

premises with full knowledge that we were home. We have a long drive, with a locked gate at the bottom. The thieves noted the locked gate, walked up the long driveway, spotted our vehicles parked in front of the garage, realized the premises were occupied, yet still burglarized our home and property."

"We urge all area residents to be vigilant about locking doors and windows. These thieves are brazen, fearless, and should be considered extremely dangerous. Please be mindful of your home, your surroundings, your property, and of course, be hyper-aware of strangers and suspicious behavior."

Some of the stolen items include:

- 17" Toshiba Satellite P35-S611 laptop computer, w/blue lid
- DeWalt cordless drill (yellow/black)
- DeWalt cordless circular saw (yellow/black)

For information about this crime, contact 503.818.7946. A \$500 reward is offered for return of the stolen items. □

Try this restaurant - you'll like it!

Patrick Ahern

Recently, recovering from some surgery and desperate to get out of the house, I took a book and headed to St. Johns, where I found a great little coffee shop, The Ladybug Organic Coffee Company. The coffee and pastries were delicious; they have a wonderful homemade soup and chili for lunch, big overstuffed chairs and a sofa, wireless internet and even a gas fireplace for the chilly months! You'll love it, even without the surgery. It's located at 8438 N Lombard, across from the US Bank. □

Attention local artists: Ridge Runner wants your art

SRN welcomes submissions of original artwork to be considered for publication in the *Skyline Ridge Runner*. We need simple illustrations of local subjects such as plants, animals, farm scenes, hills, historic buildings, roadsides, etc. They must be solid black lines on a white background (no grayscale or color) and legible for printing when reduced to 2 x 2 inches or smaller. Although illustrations on paper are welcome, electronic files are preferred; ask the Editor for details. Submissions will be chosen for publication at the sole discretion of the Editors. Please send submissions to Editor, Skyline Ridge Runner, 14355 NW McNamee Rd., Portland, OR 97231. If you wish originals to be returned to you, please include a stamped, self-addressed envelope. □

Now Open & Welcoming New Patients!

**\$99 teeth whitening
with exam and x-rays**

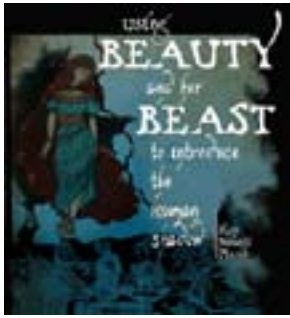
503.286.5654

8907 North Lombard Portland OR, 97203

**BRIDGETOWN
DENTAL**
FAMILY AND COSMETIC DENTISTRY

Local author writes on "Human Shadow"

Susan Ahern



Our very own neighbor, Kay Plumb, has recently published a compelling conversation about the "human shadow," *Using Beauty and Her Beast to Introduce the Human Shadow*.

In this "handsome production," as Ursula K. LeGuin describes it, of a haunting and beautifully illustrated book, Plumb challenges us by asking:

"Why does it feel like humanity is sinking further into misery, cruelty, and oppression every day? Why have so many competing versions of who's right and who's wrong, who's God and who isn't, only made the world we live in less safe?"

James Hollis, a well-respected Jungian analyst and author of numerous books, describes Plumb's exploration as a skillful retelling of the fairy tale which "quickly leads us into depths which invite introspection regarding the 'beast' within each of us and the 'beast' within our culture. This book obliges the reader to look at ordinary life through a sharpened lens and see that beneath the surface of daily events, deeper and darker energies are spilling into our lives."

Check the website for more information: www.humanshadowtalk.com. The book is available at all the usual places, including an ebook special price. Click "Where to Buy" on the website. □

Letter to the Editor

Thank you for the local history story about Logie Trail in your May newsletter. I am a bit surprised about the smallpox epidemic of 1782-84. Another writer had indicated the bubonic plague of the middle 1300s may have also been in America.

[Regarding the climate change presentation], I am mildly curious as to whether there was any discussion/comment about the past winter/spring snowfall. A man being interviewed on the radio some months ago said increased evaporation, if it falls as snow, could build up the mountain glaciers. He recommended strengthening roof rafters of your house to carry the extra weight of snow. We will find out in due time, or sooner.

Thank you,
Eugene A. Oster □

Ramona Huserik

Longtime Skyline resident Ramona Luethe Huserik died June 24 at age 90. Ramona was one of five girls and one boy

in the Samuel Luethe family. She attended Brooks School (at Skyline and Brooks Road). Her father sold potatoes, wood and other products in St. Johns, transporting his horse and wagon across the Willamette on the ferry from Linnton to St. Johns. (The St. Johns Bridge went up in 1931.)

She graduated from Scappoose High School. Ramona met her husband Frank Huserik while picking strawberries during the summer on Skyline where the "Street of Dreams" is now located (NW Glendoveer Drive). They were married in 1945; Frank died in 1996.

After graduating from the Oregon Normal School, Ramona was an elementary school teacher for more than 40 years. In 1940, she taught on Sauvie Island in a two-room school house. She took the ferry from Burlington, a small town consisting of a tavern and repair garage on Highway 30, and a few streets in the hills above. During duck hunting season, Ramona had to be sure to catch the ferry early to assure getting to school on time. Starting in 1942, she began teaching at Skyline Elementary School and taught there for 39 years.

Mrs. Huserik is survived by her sons: Phil of McNamee Road; Chris, of Hillsboro, and Anthony, of Canby; by her sister Clare; by eight grandchildren and two great-grandchildren. Remembrances to Legacy Hospice. (*Thank you to Sharon Barthmaier for her interview of Mrs. Huserik last year, which has been excerpted here.*) □

Remains of Sterling Blades found

Sterling Blades, age 77 and a resident of Logie Trail, was reported missing on December 17, 2007. Blades' truck was discovered by Longview Fibre employees May 9 on a logging road off Meissner Road in Columbia County. His remains were found June 1 about a mile from his truck and were later positively identified by the state medical examiner. *Source: South County Spotlight.* □



Service • Remodeling • Repiping

CRAIG ANDERSON PLUMBING INC.

Craig Anderson

11230 N.W. Plainview Rd. 503-232-1060
Plainview, OR 97231 CCB# 100658

Please drive carefully: Bluebirds crossing our roads

Cheryl Neal, M.D.

Bluebirds know Paradise when they find it and with the help of Prescott Bluebird Recovery Project, the Western Bluebird has found us. Western Bluebirds are delightful little birds that, like their cousin the Robin, sport a red breast. Somewhat smaller than a Robin, the Western Bluebird's back, head, and throat flash iridescent blue in the sun. Most people have not seen a true Bluebird, confusing them with the cheeky Blue Jay.

Now listed as a "sensitive" species, the Bluebird used to be the second commonest songbird in the Willamette Valley until loss of habitat signaled their decline. They are "secondary cavity dwellers" meaning that they nest in old cavities made by woodpeckers or that occur naturally in older trees. Unlike swallows, which hunt "on-the-wing", the bluebirds hunt for insects by spying a likely morsel from on-high and then swooping down to pluck it from the ground.

Three area monitors have peppered the Skyline/Cornelius Pass area with nest boxes and as a result the Western Bluebird has moved in to stay. Since the birds are territorial, with young nesting close to where they are hatched, we have had a steady increase in the number of Western Bluebirds for the last nine years.

Kessinger Farms, for instance, affords prime Western Bluebird habitat. This year the number of nesting pairs has increased 50%, up from 2 to 3 boxes, about the maximum number of nesting pairs that the farm's insect supply will support (or that the birds "assume" it will support.).

Because the birds are here in the Willamette Valley year round, that is they do not migrate south for the winter, they often "have the leisure" to brood 2, 3, or occasionally even 4 clutches of eggs throughout the summer. Because of the long, cold spring this year, the birds have started a bit later than usual and many of the first clutches of chicks did not survive our cold, wet May and June.

Now that the later clutches are well started, expect to see more of these delightful little neighbors as you are out and about. Many of the nest boxes are mounted on power poles next to the roads to assure easy access to monitoring their progress. Please be especially careful as you drive to avoid injuring these companionable little neighbors. ☐

Oregon small farm news

The Summer 2008 issue of Oregon Small Farm News, produced by OSU Extension Small Farms Program, is now available at: <http://smallfarms.oregonstate.edu>.

This issue includes articles profiling the Blue Fox Farm, a small farm in Southern Oregon; feeding pastured poultry, and scheduling vegetable plantings for continuous harvest. ☐

Sauvie Island wild food expedition

Explore edible plants of "Wapato Island" (Native Americans' name for Sauvie Island). Investigate wild foods from marshes, fields and woods, including wapato, or Indian potato, wild cherry and more. Sunday, August 10, from 1 to 4 p.m. \$22. Advance registration required by calling Wild Food Adventures at 503.775.3828. *Source:* Metro's Greenscene, Summer 2008, courtesy Sen Speroff. (*Editor's note:* I've taken several wild foods classes from John Kallas, owner of Wild Food Adventures, and they are excellent.) ☐

Forest Park Conservancy events

The Discovery Program is an annual series of guided hikes and (new this year) mountain bike rides focused on the natural and cultural history of Forest Park. Register early at hikes@forestparkconservancy.org, as space is limited to the first 12 registrants. Hikes are \$15 per participant (\$10 for members). More details on the hikes is at forestparkconservancy.org. Events continue through the end of September.

- **Saturday, July 19:** Volunteer Trail Work Party (volunteer event)
- **Saturday, July 19:** Forest Park Microcosmos at Night w/ Philipp Kirsch (guide hike)
- **Sunday, July 20:** Field Geology for kids w/ Gladys Ruiz (guided hike)
- **Saturday, July 26:** Mountain Biking in Forest Park w/ Tom Archer (guided ride)

Beginning June 25, Stephen Hatfield, Stewardship Director, leads weekly naturalist hikes, Wednesdays, 9:30 to noon. Meet at Wallace Park and carpool to Forest Park. \$5 drop-in fee, with no advance registration needed.

Want to learn more about the natural and cultural history of Forest Park? We are looking for folks interested in gaining environmental education experience. Volunteer work will entail attending the Discovery Hikes as a Forest Park Conservancy representative, giving a short 5 minute introduction and answering basic questions.

Visit www.forestparkconservancy.org for details. ☐



Bethany
BIBLE CHURCH
"We proclaim Him"
— Colossians 1:28

Founded in 1895, and still at the corner of 185th and Germantown Road.
503-645-1436

Sunday School classes: 9:45 am
Sunday Service: 10:45 am
(Nursery care available)

To find out more about us,
please visit us at our website:
www.bethanybible.org

Volunteers needed to mentor teens

Lifestyle diseases—diabetes, hypertension, and others that lead to kidney failure—are affecting people at much younger ages than in the past. One way to prevent these diseases is to change behavior through education and empowerment. MIKE Program, founded by Skyline resident Cheryl Neal, does that.

What is MIKE Program? It's Multicultural Integrated Kidney Education Program. Founded to honor the late Dr. Michael Hartnett, a local kidney doctor and Cheryl's late husband, it aims to preserve healthy kidneys by educating and empowering young people who are at high risk of disease.

MIKE Program is looking for volunteer mentors. For more information, call Jennifer Schoenbeck at 503.296.7705; email jennifer@mikeprogram.org; or fill out the "Volunteer Information" link at www.mikeprogram.org. MIKE Program is a nonprofit agency serving the Portland Metro region. □

Opportunity to comment on air permit

The public has an opportunity to testify about the rumored increased level of breathing problems in older and younger Linntonians said to be caused by the discharge of petrol particulates from the Shore Terminal facilities in Linnton.

DEQ is proposing to renew the Title V Air permit for Shore Terminal, LLC (permit # 26-2029) and is seeking public comment. To view the public notice and attachments, see: www.deq.state.or.us/news/publicnotices/uploaded/080624_4011_26-2029-PNE-0608-AQ.pdf.

The public comment period starts June 25 and ends July 31, 2008. □

Grants offered to local landowners

Kammy Kern-Korot

Landowners looking for financial help to prevent erosion along streams, protect water quality from manure runoff and other pollution sources, or improve wildlife habitat near water or in uplands should consider applying for a grant tailored for these and similar small projects.

The Oregon Watershed Enhancement Board Small Grant Program provides up to \$10,000 in Oregon Lottery funds for individual projects that help restore watershed elements such as creeks, rivers, wetlands or upland forests. Projects must benefit aquatic species, wildlife or waterway health. At least 25 percent of the OWEB funds must be matched by the landowner or from other sources; and the match may consist of in-kind services from the landowner such as labor to implement conservation practices.

Examples of high priority projects in West Multnomah are creation of heavy use areas for horses or other livestock to protect pastures, manage mud and control weeds in areas close to streams; grazing, pasture and manure management; fencing livestock out of streams (and providing alternate watering sources, if necessary); restoration of Oregon White Oak habitat (a rare and declining habitat in the Willamette Valley) and other upland wildlife habitats; and planting or seeding of native plants and invasive weed control in riparian (streamside) and wetland areas.

Anyone interested in applying should first talk with Kammy Kern-Korot or with Dick Springer, WMSWCD Manager, who represent the Lower Willamette Basin West small grant team. They may be reached by phone at 503-238-4775 or email at Kammy.Kern-Korot@or.nacdn.net or Dick.Springer@or.nacdn.net □

Classifieds

Leedy Grange announces their annual pancake breakfast fundraiser, Saturday Aug 30, 7:30 to 11:30 a.m. Adults \$5, kids \$3. Leedy Grange is in Cedar Mill, next to the Bales Thriftway parking lot.

Teenage boys willing to work. They charge \$8.00 an hour. These are kids I work with and have playing club soccer for me. I bring them and pick them up from the job site. Call if you have odd jobs that you need help with. Kim Holm 503.830.0988

The **Skyline Rural Watch Newslines** is our neighborhood's regular (or fairly regular) email listing (and commentary) of upcoming events and other news pertinent to Skyline. It's a great way to keep up with what's happening locally, and Editor Rich Edwards keeps it lively and interesting. Join the 375 neighbors who read the Newslines. To add your name to the list or submit an item, send it to skylineruralwatchnewsline@hotmail.com.

Skyline Ridge Runner

Babysitting. Hi, my name is Jackie Rollock. I am 15 years old and I have 3 years experience in babysitting. I am looking to provide my services for more people this summer. Call 503.459.1928 or 503.283.3183.

Guesthouse for rent. Cute and quiet, 550 sq. foot newly constructed guesthouse for rent. Exposed hand-hewn wood beams, large deck, wood floors, sleeping loft, gas heated fireplace, tiled shower and kitchen, new appliances and eco-friendly construction. Located on Skyline Blvd. near Newberry, just 20 minutes to downtown or Hillsboro, or a 2 minute walk to Forest Park. \$1100/month includes all utilities. This amazing space is available July 1. Pets are possible. Contact Kendra at thestream7@comcast.net or 503.240.9843.

Classifieds, p. 8 ➤

► **Classifieds**

Full care horse boarding currently available at Valley Vista Farm, three miles from Skyline x Cornelius Pass. Dressage riders preferred. Mud-free facility, covered arena, round arena, 12 x 12 stalls with paddocks. Visit valleyvistafarm.com. 503.647.0444

Kubota tractor, L3540, hydrostatic, 4WD, ROPS, loader, ag tires. Only 60 hours. Still in warranty. With 4' mower, \$18,950 or best offer. Evenings 503.621.9867, Days 971.285.6960.

Senior pictures or family portraits taken on location by local photographers Shelley Ireton or Dina Lang. Visit www.portlandcandidcameras.com or call 503. 629.8542.

Rent the Skyline Grange. Planning an event? The Grange may be the perfect spot. Contact Pat Barnard at 503.286.2857 or pbarnard2@aol.com. Visit www.skylinegrange.org for info.

Brooks Hill Historic Church. Open for weddings, music events. Beautifully remodeled. Ask about rental discounts for Skyline neighbors. 11539 NW Skyline Blvd. Call Cindy at 503.629.9700 or visit www.brookshill.com.

Weed wrenches. Eliminate Scot's broom, holly and other woody shrubs and sapling trees easily with a weed wrench. Borrow one free from Skyline Ridge Neighbors. Contact Sen at 503.621.3331. □

Community Calendar

July 15, Tuesday: West Multnomah Soil & Water Conservation District meeting, 6:00 p.m. at the Conservation Conference Room, 2701 NW Vaughn St., Suite 443. The public is invited. Information available at www.westmultconserv.org.

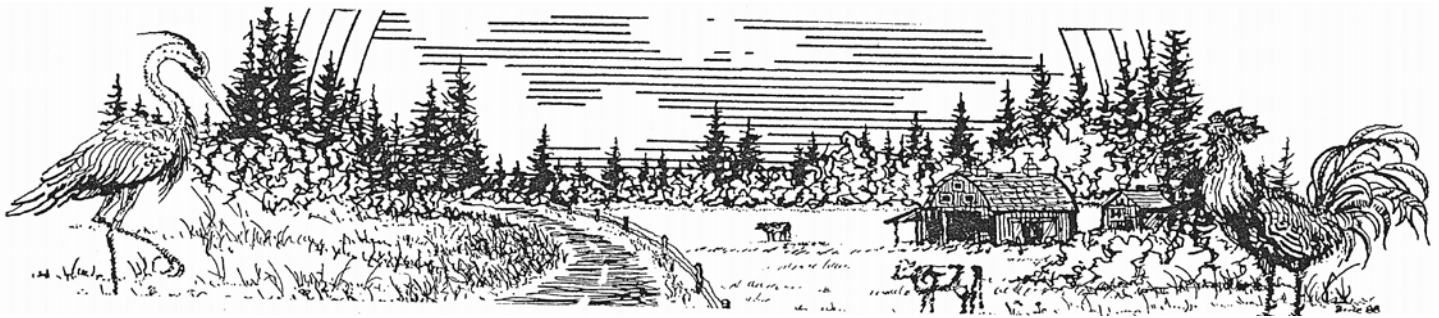
July 31, Thursday: Last day for public comment on proposal to renew air permit for Shore Terminal in Linnton. See story on p. 7.

August 2, Saturday: SRN Summer Gathering starts 2 PM at Skyline School. See story on page 1.

August 10, Sunday: Sauvie Island Wild Food Expedition. See story on p. 6.

Throughout July, August & September: Forest Park Conservancy hikes and volunteer opportunities. Visit www.forestparkconservancy.org or call 503.223.5449.

Skyline Grange Meeting: 3rd Monday of the month, 7:30 PM at Grange hall, 11275 NW Skyline Blvd. Visit www.skylinegrange.org. □



Skyline Ridge Runner
Skyline Ridge Neighbors
14355 NW McNamee Road
Portland, OR 97231

NONPROFIT ORG. US POSTAGE PAID PORTLAND, OR PERMIT NO. 708
--

ECRWSS ** R2
POSTAL CUSTOMER