

# Skyline Rural Watch Newsline

Mailbox: [newsline@srnpdx.org](mailto:newsline@srnpdx.org)

Phone: (503) 621-3501

[SRNPDX.ORG](http://SRNPDX.ORG) | FaceBook Group: Skyline Ridge Neighbors |

July 10, 2020

## ROADS



This news release is available [online](#).

## NEWS RELEASE

Release: July 9, 2020

Contact: Mike Pullen, Communications Office, 503-209-4111,  
[mike.j.pullen@multco.us](mailto:mike.j.pullen@multco.us)

### NW Cornelius Pass Road closures for construction and weekend megaload moves

NW Cornelius Pass Road will close at night this weekend to accommodate moves of large industrial loads before the road closes for summer construction early on the morning of Monday, July 13.

#### Weekend closures for megaloads

Sections of NW Cornelius Pass Road will be closed at night on July 10-11 to accommodate moves of very large industrial loads traveling from the port of Longview, WA to Intel's campus in Hillsboro. The moving vehicles are 189 feet long and 22 feet wide, requiring the two-lane road to be closed during the moves.

NW Cornelius Pass Road will be closed at times between Highway 30 and NW Germantown Road at night from 9 pm on Friday until as late as

4 am Sunday. The road will be open during the day, generally by 4 am.

- The road will be closed to traffic during the moves. The closed section will be phased, but will extend from Highway 30 to the Washington County line.
- Through traffic can avoid delays by using the detour of Highway 30 south to I-405 south to Highway 26 west.
- The megaloads will pull off the road periodically to let traffic pass, but drivers should expect delays and use alternate routes during the moves.

July 13 closure for construction

NW Cornelius Pass Road will be closed to through traffic between Highway 30 and NW Skyline Blvd. before the morning commute on Monday, July 13. Road users will need to use alternate routes until the end of September while contractor Wildish Standard Paving completes safety improvements on the road.

Work this summer will realign the two-lane road to reduce sharp curves at two locations. Last year the contractor completed other safety improvements in the corridor, including all work south of NW Skyline Blvd.

When the road is closed to through traffic, access will be maintained for local residents and emergency services. The contractor will set up a hard road closure just north of NW 8th Ave. where a culvert that carries a creek under the road will be replaced. No vehicles will be able to pass that point for several months. The second work location is at the sharp S curves north of NW Skyline Blvd., where the road will be realigned. Flagger will direct traffic through the S curves when one lane is closed. Alternate routes for through traffic are:

- Cars, Pickup Trucks and Motorcycles: From Highway 30 take NW Newberry Road and NW Skyline Blvd. to NW Cornelius Pass Road to Washington County. A temporary traffic signal at NW Newberry Road will allow traffic to safely turn left onto Highway 30. This detour is shorter than in 2019, since work south of Skyline is complete.
- Trucks: From Highway 30 take I-405 south to Highway 26 west. When Cornelius Pass Road is closed, Highway 26 is the nearest truck route to Washington County.
- Trucks Carrying Hazardous Loads: These trucks cannot use the Highway 26 tunnel in Portland. The detour is longer, taking I-5 south to Highway 217 north to Highway 26 west.

NW Logie Trail Road will be closed to through traffic after NW Cornelius Pass Road is closed after July 13. The road just north of Cornelius Pass Road is too narrow, steep and winding to safely accommodate cut-through traffic.

The Oregon Legislature provided \$5.65 million for the project. The Legislature also directed that the section of NW Cornelius Pass Road between Highway 30 and Highway 26 be transferred to the Oregon Department of Transportation after the project is completed. For information about the transfer, visit: <https://tinyurl.com/CornPassTransfer>.

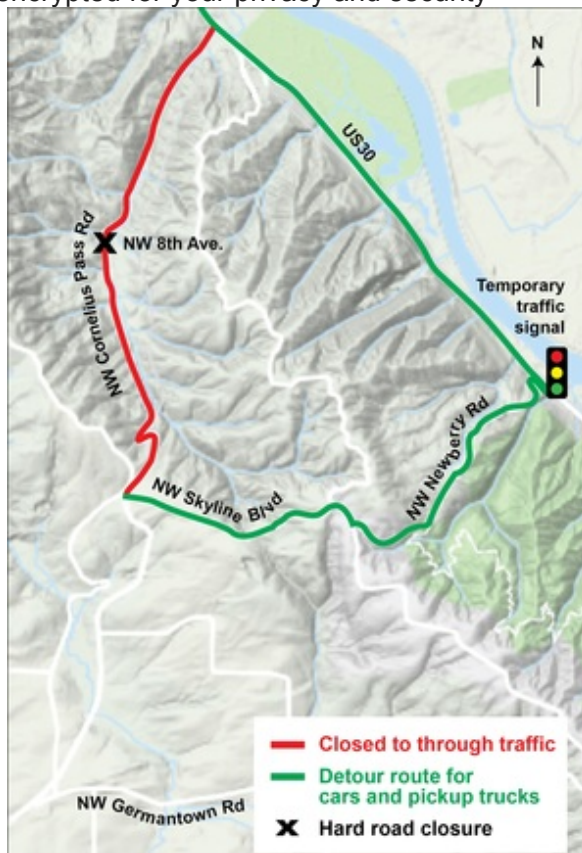
For information about this summer's construction and to sign up for project updates visit [www.multco.us/cornpass](http://www.multco.us/cornpass).

###

[Mike Pullen](#) | Multnomah County Communications Office | 503-209-4111 | [newsroom](#) | [twitter](#) | [facebook](#)

Sign up for the MultCo Message monthly e-newsletter [here](#).

This email was encrypted for your privacy and security





FROM [SKYLINE RIDGE NEIGHBORS WEBSITE - SRNPDX.ORG](http://www.srnpx.org)  
[SKYLINE VOICES:](http://www.srnpx.org)

<http://www.srnpx.org/>: Local author's essays, opinions, ponderings and musings. We welcome anyone in the neighborhood to submit a blog post. Submit to: [web\\_edit@srnpx.org](mailto:web_edit@srnpx.org)

### [CALENDAR](#)

[srnpx.org](http://www.srnpx.org) - Calendar: <http://www.srnpx.org/calendar1.html>

### [Resource Directory:](#)

As a service to neighbors, SRN publishes a listing of local government agencies and businesses in the Skyline Resource Directory. Follow the links in this section to view its contents and learn how to add a business or agency listing.

Listing of organizations and businesses herein does not imply any

endorsement of SRN nor does it imply a lack of endorsement for similar organizations or businesses not included.

#### COMMUNITY LINKS:

Skyline Grange: <http://www.srnpx.org/skyline-grange-894-0>

Forest Park Conservancy: <http://www.forestparkconservancy.org/>

Linnton Community Center: <http://www.linntoncommunitycenter.org/>

Linnton Neighborhood Association: <http://linntonna.org/>

West Multnomah County Soil and Water Conservation District: <http://wmswcd.org/>

Skyline School: <http://www.pps.k12.or.us/schools/skyline/>

Skyline School PTA: <https://skylineschoolpta.com/>

Lincoln High School: <http://www.pps.k12.or.us/schools/lincoln/>

About the Newsline: Skyline Rural Watch Newsline is a part of Skyline Ridge Neighbors (SRN) and has been produced since June 1994 as a means to communicate neighborhood information. The Newsline is produced by Laurel Erhardt (editor) with help from Miles Merwin, Libby Merwin, and Sen Speroff

The Newsline depends on you as a source of accurate information about local crimes, upcoming events, and other news pertinent to the area. If you have information you would like considered for the Newsline, you may do so by e-mailing the information to [newsline@srnpx.org](mailto:newsline@srnpx.org), or leaving a message at (503) 621-3501. Urgent, timely items (crimes, lost pets) should be emailed to [alert@srnpx.org](mailto:alert@srnpx.org).

If you would like more detailed information about any item on the Newsline, request that information & SRN will e-mail it to you if available.

You can subscribe to the Newsline at the [Skyline Ridge](#)

[Neighbors Website, SRNPDX.org](http://www.srnpx.org). Tell your neighbors about this free Newsline service.

About Skyline Ridge Neighbors: SRN is a neighborhood association serving much of unincorporated northwest Multnomah County and some adjacent areas within the city of Portland. SRN is registered as a neighborhood association within Multnomah County, registered as a non-profit public benefit corporation with the State of Oregon and approved as a 501(c)(3) non-profit organization under the IRS Code. SRN is operated by volunteers and with donated funds entirely.

If you would like to donate to SRN in support of its activities, such as this free Newsline service and the publication of its quarterly Skyline Ridge Runner, send your donation to "Skyline Ridge Neighbors", c/o Rachael Brake, 14109 NW Rock Creek Rd, Portland OR 97231 or donate with credit card thru PayPal - [http://www.srnpx.org/](http://www.srnpx.org) Contributions are tax deductible to the extent allowed by law.

