

[View this email in your browser](#)



**Skyline Rural Watch Newsline**

Mailbox: [newsline@srnpdx.org](mailto:newsline@srnpdx.org)  
Phone: (503) 621-3301  
SRNPDX.ORG | Facebook Group: [Skyline Ridge Neighbors](#)



Date: **October 14, 2022**

**SKYLINE GRANGE #894**  
<https://skylinegrange894.org/>

**WEATH-MAKING WORKSHOP** @ Skyline Grange

The holidays are fast approaching, so join us for a fun and festive afternoon workshop as you craft your own beautiful holiday wreath. No experience necessary! Susan Still and Judy Flynn will guide you through the process. This is a new event, a fundraiser for the Capital Improvement fund, just added to the Grange calendar.

- WHEN: Sunday, November 27, 2022
- TIME: 1-4 p.m.
- WHERE: Skyline Grange, 11275 NW Skyline Blvd.
- COST: \$25 for non-Grange Members & \$20 for Grange Members. Materials are provided.
- REGISTER: Registration is required since space is limited. Email [skylinegrange894@msn.com](mailto:skylinegrange894@msn.com) to register, include your name, address, phone number and email. Deadline to register is Tuesday, November 22.
- PAYMENT: Send check made out to "Skyline Grange" to 14109 NW Rock Creek Rd., Portland, OR 97231 or call Rachael at 503.621.3423 to arrange payment by Venmo or credit card.
- Supplies, greens and cones are provided, but you are encouraged to forage your garden for special additions (hydrangeas, nandina, skimmia, boxwood, etc)
- BRING: Bring pruners and gloves (optional)

**SKYLINE LIVING SERIES OF PRESENTATIONS:**

**"YIKES! EAB! A NEW BUG IN TOWN!"**

The Emerald Ash Borer (EAB) will start off our 2022-23 Series. The Emerald Ash Borer (EAB) is an exotic, destructive beetle. It was first discovered in Oregon in June in nearby Forest Grove. This pest has proven deadly to all ash species in North America and Europe, killing up to 90% of ash species in some locations. Our native Oregon ash (*Fraxinus latifolia*) is a common tree in our local woodlands and there is a number of ornamental species too. If you value the beauty of our woodlands, you should attend this presentation because Oregon Dept. of Agriculture needs all of us to be on the look for signs of an infestation and to report it quickly so action can be taken.

WHEN: Thursday, October 20, 2022  
TIME: 7 p.m.  
WHERE: Skyline Grange, NW Skyline Blvd., Portland 97231  
SPEAKER: Laura Taylor, our new Forest Conservationist from West Multnomah Soil and Water Conservation District (WMSWCD).  
DETAILS:

- Learn about ash trees, their importance to our PNW ecosystem, and how to identify them,
- Learn about EAB, what they look like, their lifestyle, and why they are so destructive to ash species,
- Learn what to do immediately if you suspect EAB and whom should you contact,
- Learn what can be done to limit its impact.

**TRAVEL MOVIE NIGHT: "Amélie" takes you to France**

Join us for a showing of the 5th movie in our Travel Movie Series

WHAT: "Amélie"  
WHEN: Thursday, October 20, 2022 at 6:30 p.m. (doors open at 6)  
WHERE: Skyline Grange, 11275 NW Skyline Blvd.

SUMMARY: Amélie is a shy waitress in a Montmartre café. After returning a long-lost childhood treasure to a former occupant of her apartment, and seeing the effect it has on him, she decides to set out on a mission to make others happy. She tries to enrich the lives of those around her by weaving her special brand of mischievous magic.

The film is fast-paced, full of quirky surprises in both plot and characters. So original, so funny, so warm, and so unhollywood-like.

- Genre: Romance, Comedy
- Rate: R (for imaginary sexual content, though France rates it U for unrestricted age)
- Release: 2001
- Actors: Audrey Tautou, Mathieu Kassovitz, Rufus
- Reviews: Rotten Tomatoes gives it 8.6/10
- Time: 2 hours, 1 minute
- Language: French (with English subtitles)

**SOUP SUPPER Coming Up**

Mark your calendar! After a 2-year pandemic hiatus, Community Soup Supper returns.

DATE: Saturday, November 5, 2022  
TIME: Serving from 5-7  
WHERE: Skyline Grange, 11275 NW Skyline Blvd.  
DETAILS:

- 12 soups to please any palate. Yes, this includes some of your favorites – clam chowder, chili, healing chicken soup, pea soup, and more.
- Soups, fresh salads, fresh baked breads, and desserts
- Not only nutritious, but delicious
- You enjoy, we cook.
- Suggested donation of \$10 for those over age 14; \$5 for those ages 5-14 & under 5 free
- Catch up with old neighbors and meet new ones
- Yup, proceeds go to our Capital Improvement

**SKYLINE GRANGE ARTISAN FAIR Coming Up**

Mark your calendar for Saturday-Sunday, November 19-20, 2022. Registration to be a vendor is now closed, but if you wish to be considered in 2023, contact [kenpinicus@comcast.net](mailto:kenpinicus@comcast.net)



**Watch out for wildlife: Vehicle-wildlife collisions peak this time of year**

**Roadkill salvagers reminded to get their animal tested for CWD**

October 12, 2022

**SALEM, Ore.** — Vehicle collisions with deer and elk tend to peak in October and November, when migration and breeding (the "rut") puts them on the move, making them more likely to cross roads. Fewer daylight hours and rainy weather also reduce drivers' visibility.

On average, ODOT documents more than 6,000 vehicle collisions with deer and elk each year. The actual number of collisions is likely higher, as many are not reported if there is minimal damage or no human injuries.

ODFW and ODOT are asking Oregonians to Watch out for Wildlife this time of year and follow these tips:

- Be careful when driving in areas that have special signs indicating the possible presence of wildlife. These signs are posted for a reason.
- Be alert in areas with dense vegetation along the road or while going around curves. Wildlife near the road may not be visible.
- If you see one animal, stay alert. There may be others nearby.
- If you see wildlife on or near the road, slow down and stay in your lane. Many serious crashes are the result of drivers losing control as they swerve to avoid wildlife.
- The same advice applies for smaller wildlife like raccoons: try to stay in your lane and do not swerve for these animals. They are less dangerous to vehicles than big game animals and maintaining control of your vehicle is most important.
- Always wear your seat belt. Even a minor collision could result in serious injuries.

ODFW, ODOT and partner organizations are working to reduce the risk of vehicle-wildlife collisions by building wildlife crossings. The crossings allow wildlife to safely follow their migration patterns over or under a road. Data shows wildlife crossings on Hwy 97 near Sunriver have reduced vehicle-wildlife collisions by nearly 90 percent.

The bipartisan infrastructure bill passed by Congress in 2021 is providing \$50 million in competitive grants to the states for wildlife crossings and other mitigation. ODFW, ODOT and other partners will be working to secure grants for projects.

Oregon drivers can also show their support by purchasing a [Watch for Wildlife license plate](#). The revenue generated from license plate sales will benefit projects that help wildlife move within their range and between habitat patches. Originally developed by the Oregon Wildlife Foundation, the license plate is now available at the DMV.

**Roadkill salvagers: CWD testing is mandatory**

As wildlife-vehicle collisions peak, so does participation in ODFW's roadkill salvage program. Since 2019, salvaging deer or elk struck by a vehicle has been legal in Oregon. Salvagers are required to fill out a free online permit available at <https://myodfw.com/articles/roadkill-salvage-permits>

Since the program kicked off in January 2019, 5,027 permits have been issued, with most for black-tailed deer in Western Oregon, where there are more drivers.

Salvagers are also required to bring the head and antlers of all salvaged deer and elk to an ODFW office for testing within five days. This is so ODFW can test the animal for Chronic Wasting Disease (CWD), a fatal neurological disease that is ODFW has been on the lookout for since it first appeared in the late 1960s in Colorado.

The disease has never been detected in Oregon's wildlife. But CWD testing regulations have taken on new urgency after it was detected in several wild deer and elk in northwest Idaho, about 30 miles from Oregon's border, late last year.

Infected animals can spread the disease for several years before showing symptoms (which include loss of balance, drooling, emaciation or wasting and eventual death). Testing apparently healthy deer and elk early in the course of the disease when they are not showing symptoms is the most effective method to catch the disease before an animal has spread the disease across the landscape and to other animals.

"With the disease now much closer to the state's borders, we just want to remind roadkill salvagers about the mandatory testing requirements," explained ODFW Wildlife Veterinarian Dr. Colin Gillin. "The more animals the state tests, the more certain ODFW can be that the disease is not in the state. If it is detected, ODFW can implement its response plan to contain the spread of the disease.

Test results are expected to take up to a month. If an animal ever tests positive for CWD, a biologist or veterinarian will phone the person who salvaged that animal directly.

Negative test results will be posted for roadkill salvagers to individually check online at [https://www.dfw.state.or.us/wildlife/health\\_program/CWD-testing/](https://www.dfw.state.or.us/wildlife/health_program/CWD-testing/). To find your result, enter RSP before your permit number (e.g. RSP5001).

###

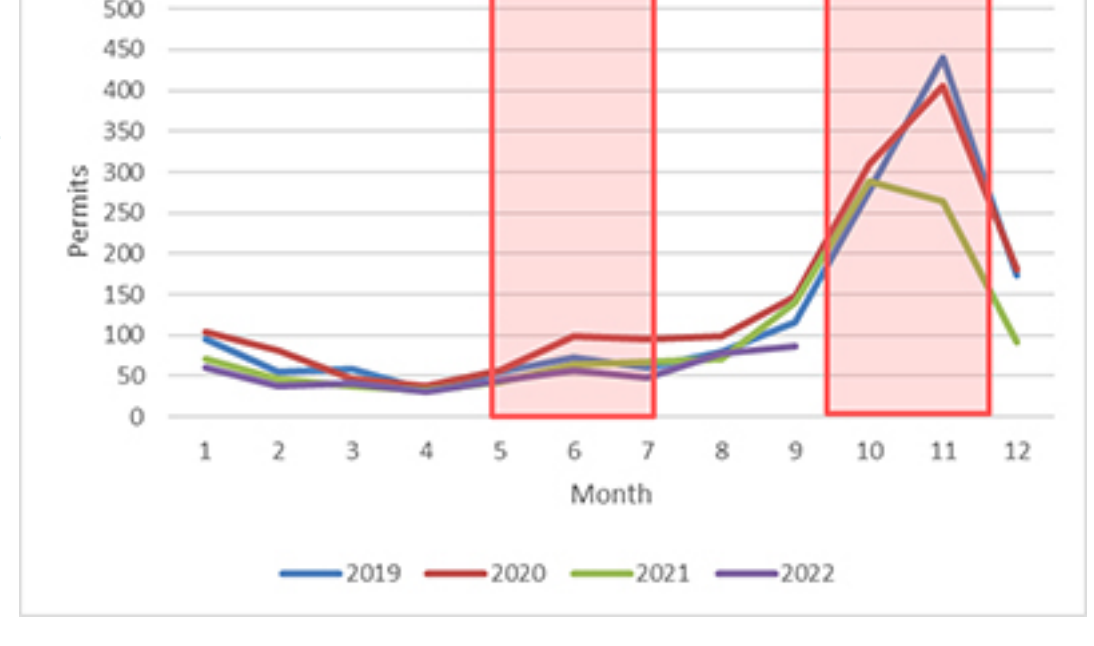
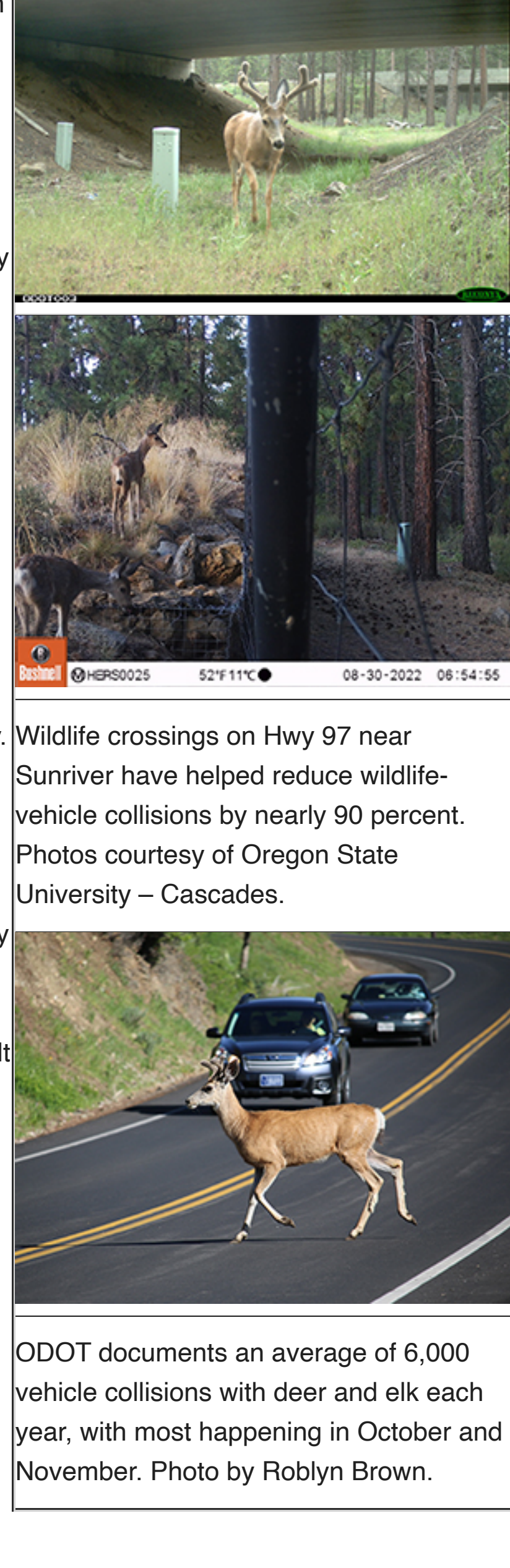
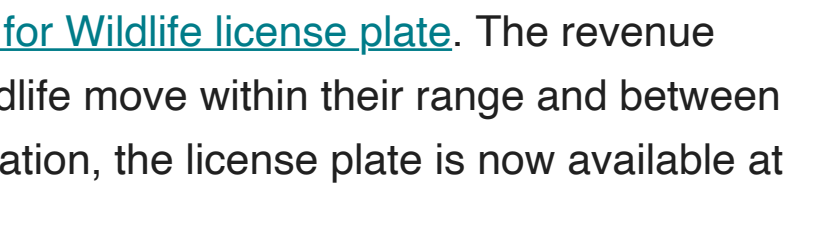


Figure 1. Total roadkill salvage permits issued by month. Red boxes indicate peak animal movement (migration and rut) seasons. Oregon 2019 – 2022.



Wildlife crossings on Hwy 97 near Sunriver have helped reduce wildlife-vehicle collisions by nearly 90 percent. Photos courtesy of Oregon State University - Cascades.



ODOT documents an average of 6,000 vehicle collisions with deer and elk each year, with most happening in October and November. Photo by Roblyn Brown.

Contact Michelle Dennehy, ODFW, (503) 931-2748, [Michelle\\_N.Dennehy@odfw.oregon.gov](mailto:Michelle_N.Dennehy@odfw.oregon.gov)  
: Matt Noble, ODOT, 503-779-9868, [Matt.a.noble@odot.oregon.gov](mailto:Matt.a.noble@odot.oregon.gov)



roads: <https://multco.us/roads>; landuse: <https://multco.us/landuse>

**REPORT A ROAD PROBLEM**

If you see a hazardous road condition (pothole, debris, etc.) on a Multnomah County maintained road, report the problem at [Report Hazardous Road Conditions | Multnomah County](#) ([multco.us](https://multco.us)).

**MULTNOMAH COUNTY LAND USE NEWS**

Multnomah County Land Use & Transportation Program  
1600 SE 190TH Ave., Portland, OR 97233  
Phone 503-988-3043. Fax 503-988-3389. <http://web.multco.us/land-use-planning>

**LAND USE DIVISION OPERATIONS**

Multnomah County Land Use offices are open by appointment only. Appointments are available on Tuesdays and Wednesdays, from 9am to 12pm and 1pm to 4pm. To make an appointment, call 503-988-3043 or visit [land.use.planning@multco.us](http://land.use.planning@multco.us).

**DECISION: 18139 NW SKYLINE BLVD.**

CASE #: 182-2021-15921  
LOCATION: 18130 NW Skyline Blvd.  
BASE ZONE: Commercial Forest Use-2 (CFU-2)  
OVERLAYS: Significant Environmental Concern for wildlife habitat, streams, and view (SEC-h & SEC-s, SEC-v) and Geologic Hazards (GH)  
PROPOSAL: The applicant proposes to construct a replacement dwelling for the existing dwelling destroyed by a fire in 2022.  
DECISION: Approved with Conditions. This decision is final unless appealed by Thursday, October 20, 2022 at 4 p.m.. An appeal requires a \$250 fee and must state the specific legal grounds on which it is based. Comments should be directed toward approval criteria applicable to the request.  
DETAILS: Go to [T2-2022-15921 NOD 10062022.pdf](https://www.mtc.ca.gov/~/media/Projects/2022/182-2021-15921/NOD_10062022.pdf) ([multco-web7-psh-files-usw2-s3-us-west-2.amazonaws.com](https://web7-psh-files-usw2-s3-us-west-2.amazonaws.com/))



<https://www.tvfr.com/>

**BACKYARD BURN SEASON DELAYED**

The fall backyard burn season is delayed and will not begin until further notice due to the danger of fire. It normally would begin on Oct. 1. This TVF&R burn ban prohibits all of the following:

- Backyard or open burning (branches, yard debris, etc.).
- Agricultural burning (agricultural wastes, crops, field burning, etc.).
- Any other land clearing, slash, stump, waste, debris or controlled burning.

**Put a Lid on Cooking Fires**

Cooking is one of the leading causes of home fires and fire injuries. Last year, more than one-third of the residential fires that Tualatin Valley Fire & Rescue responded to, began in a kitchen. TVF&R crews encourage you to minimize your risk of a fire by organizing a safe kitchen and practicing these safe cooking tips:

- Keep a watchful eye on what you are cooking — never leave cooking unattended.
  - Keep your cooking area clean, including the stovetop, oven, and exhaust fan.
  - Keep dish towels and pot holders away from the burners on your stove.
  - Watch your sleeves to prevent them from catching fire or getting caught on pan handles.
  - Cooking oil can ignite quickly. Heat oil slowly and watch it closely.
  - Keep a fire extinguisher in your kitchen. Store it in an easy-to-reach location and know how to use it. The discharge of a portable fire extinguisher only lasts between eight and 10 seconds.
- Put a lid on it.
- The easiest way to extinguish a small pan fire is with a pan lid. Turn off the burner and carefully slide a pan lid over the pan from the side. The lid will "smother" the fire, while turning off the burner removes the heat. Do not move the pan until the fire is completely extinguished and the pan is cool. If you do not have a pan lid, you may also use a baking sheet or pizza pan.
- Never transfer a burning pan from the stovetop to the sink or out an exterior door. The fire may grow in size and burn you or spread to a countertop, cabinets, or curtains.
- Grease and water do not mix.
- Never pour water on a grease fire. Water causes these fires to explode as the burning material stays on top of the water, causing it to spread and putting you at severe risk of getting burned.
- If the fire is large and/or continues to grow, do not attempt to extinguish it. Quickly get everyone outside and immediately call 911 from a cellphone or neighbor's house.
- For additional safety tips, visit [www.tvfr.com](http://www.tvfr.com).

**Advertisements**

**The Goddess Collective - Skyline Grange Women's Circle**

This monthly gathering is for women who are looking for joy, creativity and inspiration through community building and self-discovery by learning about goddess archetypes.

Join us monthly on **second Wednesdays at 7:00 PM** at the Skyline Grange. Class fee \$25. To register: [natasha@natasha-jones.net](mailto:natasha@natasha-jones.net)

Circle is facilitated by Natasha Jones - energy healer, yoga teacher and modern mystic.

**Advertise in the Newsline**

We welcome classified ads from individuals, families, and home-based businesses within the SRN boundaries. Ads are limited to 50 words, and be sure to include your contact information. Send them to [newsline@srnpdx.org](mailto:newsline@srnpdx.org) and indicate how many times you want your ad to run. Prices for Newsline ads are as follows:

Families & individuals: First issue is free, then \$8 for each additional repeat of the same ad.

Home-based Businesses: \$7.50 per Newsline issue

Commercial businesses: \$15/issue

Please pay for your ad in advance by mailing a check payable to Skyline Ridge Neighbors, Inc. to our Treasurer, Rachael Brake, 14109 NW Rock Creek Rd., Portland 97231. Be sure to indicate which Newsline ad you are paying for.

**Skyline Ridge Neighbors, Inc Website**  
<https://www.srnpdx.org/>

About Skyline Ridge Neighbors — The Skyline Ridge Neighbors (SRN) is a neighborhood association serving much of unincorporated northwest Multnomah County and some adjacent areas within the city of Portland. SRN is registered as a neighborhood association within Multnomah County, registered as a non-profit public benefit corporation with the State of Oregon and approved as a 501(c)(3) non-profit organization under the IRS Code. SRN is operated by volunteers and with donated funds entry.

If you would like to donate to SRN in support of its activities, such as this free Newsline service and the publication of its quarterly Skyline Ridge Runner, send your donation to "Skyline Ridge Neighbors", c/o Rachael Brake, 14109 NW Rock Creek Rd, Portland OR 97231. Contributions are tax deductible to the extent allowed by law.

About the Newsline  
Skyline Rural Watch Newsline is a part of Skyline Ridge Neighbors (SRN) and has been produced since June 1994 as a means to communicate neighborhood information. The Newsline is produced by Laurel Edhardt (editor). The Newsline depends on you as a source of accurate information about local crises, upcoming events, and other news pertinent to the area. If you have information you would like considered for the Newsline, you may do so by e-mailing the information to [newsline@srnpdx.org](mailto:newsline@srnpdx.org), or leaving a message at (503) 621-3501. You can subscribe to the Newsline at [SRNPDX.org](mailto:SRNPDX.org) [Get the Newsline](#) tab.

About the Ridge Runner  
The Skyline Ridge Runner is a quarterly publication mailed to approximately 1400 households in rural northwest Multnomah County, Oregon. A color version is also distributed via email subscription and is posted on website [srnpdx.org](https://srnpdx.org) website. It is published by Skyline Ridge Neighbors (SRN), an all-volunteer non-profit neighborhood association, as a public service to provide news and information to residents.

If you have any ads, calendar listings, news items, stories, letters, photos, etc. that you would like to submit for publication, please email them to [rdgrunne@srnpdx.org](mailto:rdgrunne@srnpdx.org). Or call Miles at (503-621-9867) to let him know you're going to send something for the Ridge Runner. Please note that the Ridge Runner may not reach mailboxes until the middle of the month of publication (April, July, October, January) Deadlines for all ad submissions are the 15th of March, June, September and December.

Calendar  
Skyline Ridge Neighbors' 1st, 4th & 9th Board Meetings: The SRN board meetings are routinely held the 2nd Thursday of the month at 6:30 pm by Zoom. All are welcome to attend. For Zoom login information please reply to this email.  
Find the community calendar here: <http://www.srnpdx.org/calendar.html>

Resource Directory  
As a service to neighbors, SRN publishes a listing of local government agencies and businesses in the Skyline Resource Directory. Follow the links in this section to view its contents and learn how to add a business or agency listing. Listing of organizations and businesses herein does not imply any endorsement of SRN nor does it imply a lack of endorsement for similar organizations or businesses not included.

- Community Links  
Skyline Ridge Neighborhood Emergency Team (NET): [SkylineRidgeNET@gmail.com](mailto:SkylineRidgeNET@gmail.com)  
Skyline Grange: <https://skylinegrange894.org/>  
Forest Park Conservancy: <https://www.forestparkconservancy.org/>  
Linton Community Center: <http://www.lintoncommunitycenter.org/>  
Linton Neighborhood Association: <http://lintonora.org/>  
West Multnomah County Soil and Water Conservation District: <http://www.wmcsd.org/>  
Skyline School: <https://www.skyline.k12.or.us/skylineinfo/>  
Skyline School PTA: <https://www.skylinepta.org/>  
Linton High School: <https://www.peh.k12.or.us/peh/schools/lhcnhs/>

